

Glossary And Pictures Of Clinical Manifestation Of Cutaneous Adverse Drug Reaction

Acneiform Eruption

Rash resembling acne



Alopecia

Excessive hair loss



Erythema multiforme

Target lesions comprising of a dark central spot surrounded by a pale halo which is then surrounded by a red ring, occasionally blister at the centre.



Erythema nodosum

Painful deep red nodules over the legs



Fixed drug eruption (FDE)

A few, round erythematous patch, blisters or erosions over the lips, face, hands, feet and genitalia. FDE recurs at the same sites and may extend to other areas if the drug is taken again.



Maculo-papular rash (exanthem)

Generalised small red macules and papules



Photosensitivity

Erythema or rash over sun exposed areas.



Pigmentary changes

Colour changes of skin, hair, nails and mucous membranes.

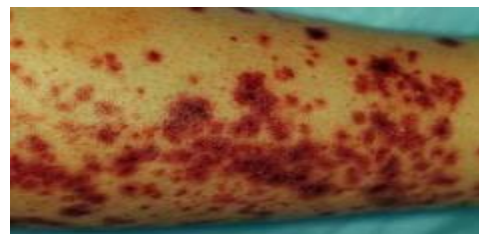


Pruritus

Itch of the skin without rash

Purpura

Non-blanching, dark red macules or bruises due to bleeding from small blood vessels.



Toxic epidermal necrolysis

Life-threatening variant of Stevens-Johnson Syndrome with large areas of denuded skin



Stevens-Johnson Syndrome

Serious variant of erythema multiforme with involvement of more than 2 mucous membranes (oral/ eye/ genitalia)



Urticaria

Eruption of wheals/ hives lasting less than 24 hours



Angioedema

Swelling of the mucous membrane (oral/ eye/ genitalia). May be associated with laryngeal oedema if severe.



Vasculitis

Palpable purpura



Vesiculobullous reaction

Blistering eruption of the skin

